

CeLAN

Door Controller-EZ

**Product Part #
Ce-Door-EZ**

Datasheet:
DS-Ce-Door-EZ Rev A

CeLAN Door Controller System Module—EZ

**18 Supervised Digital Inputs
Integral 60 Watt System Power Supply
Onboard 2x16 LCD display**

**Up To 32 GB Event Memory can Store
up to 260 million events on a removable
SD card**

**Supervised 24VDC Power for Photo Eyes
and Proximity Devices**

**customerservice@cinchsystems.com
www.cinchsystems.com
763.497.1059**

**UL325 Listed
UL991 Listed**

Flexible and Scalable

The Ce-Door-EZ Module provides a microprocessor based standalone door controller system or a multi-door/gate system when used with a Cinch Control Panel.

The 2 x 16 display provides real time clear, easily understood instructions for operations, programming, maintenance and diagnostics. All system inputs and outputs are protected against transients and static discharges. All communication Interfaces are optically isolated. Supports trouble free 4-Conductor data wiring for simplified, easy to install systems.

Security hardening options include- Core UL 1076 security platform to build on for system integration needs. Communication lines to all modules utilize AES data packet encryption.



Several configurations available, assembled in a ready to install professionally labeled 12 x 12 NEMA 4 enclosure with standard or lighted open, close, and stop button options as well auto/manual selector and system disconnect.



Specifications

Input Power: 24 VAC nominal (16.0 VAC minimum, 35 VAC maximum). *NOTE: Rated output power is available at 24VAC. Allowable output power decreases significantly at input voltages other than 24 VAC.*

Output Power: 24VDC or 12VDC (60 W total)

Input Supervision: 3.01K ohm resistor

Outputs: 5-Form A relays and 2-Form C relays rated at 10A @120VAC and 10A @ 30VDC

Board Dimensions: 9.13 (L) X 4.25 (W)

Operating Temperature: -10 °to 158° F (-23° to 70° C).

Storage Temperature: -10 °to 158° F (-23° to 70° C).

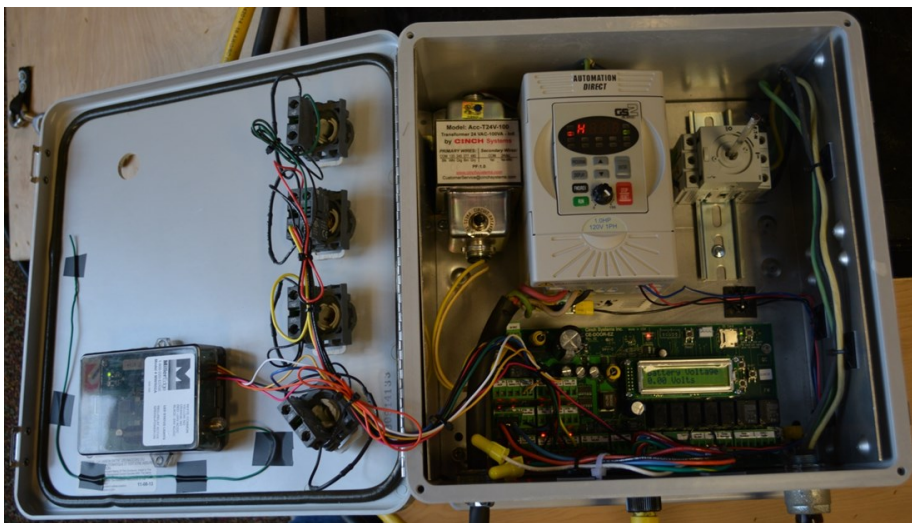
Maximum Humidity: 90% relative humidity, non-condensing

Door Controller Inputs

Card Reader	Fire
Safety 1 - Universal	Interlock
Safety 2 - Universal	Radio
Safety 3 - Universal	Safety 6 - Photo Eye 2
Safety 4 - Universal	EFO
Safety 5- Photo Eye 1	Input 1
Closed Limit	Manual Open
Open Limit	Manual Close
Auto/Manual	Manual Stop

Door Controller Outputs

Open	Output 1
Close	Output 2 (Traffic Lights)
Warning Horn	Door Position
Door in Motion	



Complete Control Unit Includes:

- NEMA 4 Enclosure
- Control Board
- Transformer
- Variable Frequency Drive
- Power Disconnect Switch
- Lighted Control Buttons
 - Open
 - Close
 - Stop
- Auto/Manual Switch
- RF Receiver (optional)